

# **Working Together for Wirral's Children**

## **SECONDARY SCHOOL ADMISSION ARRANGEMENTS FOR SEPTEMBER 2025**



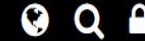
# All Information on our school website:

<https://www.stgeorges.wirral.sch.uk/page/grammar-school-entrance-examination-11/44054>



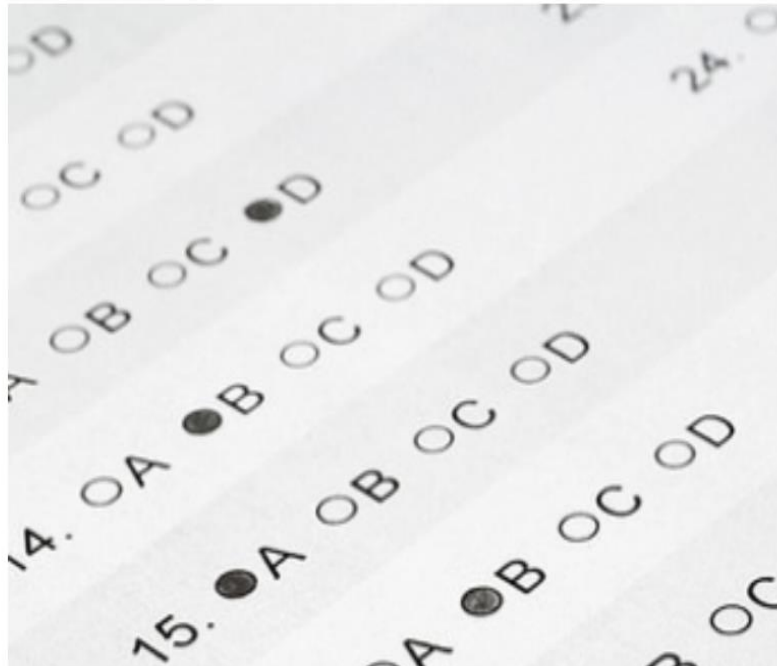
SCHOOL TOUR

COOKIES / PRIVACY



## St George's Primary School

[Home](#) [Year Groups](#) [About Us](#) [Key Information](#) [Curriculum](#) [Parents](#) [News and Events](#)



- English and MFL
- Maths
- STEM
- Humanities
- Personal Development and PE
- Creative Arts
- Enrichment and Trips
- Teaching and Learning Policies and Great Teaching Toolkit
- 'Jump Ahead' Tuition Program and 'Summer Camp'
- Assessment at St George's
- Examinations



Year 6 (end of KS2) national Standard Attainment

Grammar School Entrance Examination (11+)

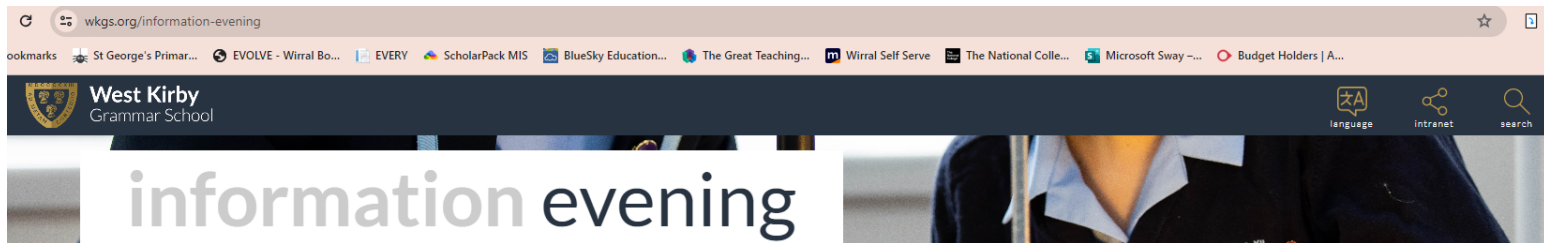
# What Are My Choices?

Legally, you can apply for any school in the country.  
Limitations are:

1. Entrance Examinations
2. Admission Criteria due to gender, faith or other circumstances (BHSA has their own admission criteria).
3. Admission code. Distance is the main factor that affects parental rights.
4. Meeting timelines for admission. If you are late you lose most parental/carer rights.
5. Fee paying/scholarship requirements.

# Open Evenings

Children are invited to evening sessions.  
Some hold daytime sessions for parents and carers.  
Visit websites or contact schools.  
May offer alternative dates.



## Year 4 & 5 Information Evening

Our Year 4 & 5 Information Evening took place on Tuesday 25th April. If you were unable to join us, you can watch a video recording of the Headteacher's Talk and take an interactive virtual tour of the school..

### Headteacher's Talk



### Interactive Tour



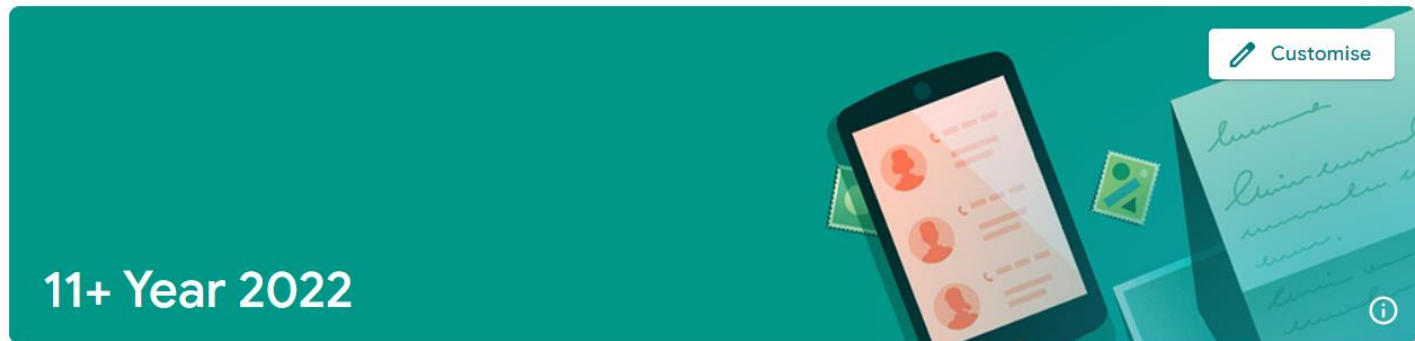
## Tips for Choosing the Right School for Your Child

### **Number One:**

**Put your child at the heart of your decision making. What is best for them? Consider their interests, strengths and how they will adapt, manage travel etc.**

# Wirral and Selective Education?

- Wirral Local Authority Model
- Some schools have entrance exams
- 4 grammar schools put children through Verbal Reasoning Admission tests (11+)
- 2 Catholic Selective schools have their own entrance exams. Upton Hall use verbal reasoning and English. St Anselm's use verbal reasoning, English and Maths paper.
- Currently only one academy has an entrance process. Birkenhead school for girls use an exams and lottery model (music and English).
- Can apply for out of borough selective schools.



Meet

Join

Visible to students

Class code

gsm3a35

Upcoming

No work due in soon

[View all](#)

Announce something to your class



Head Teacher

17:28



Well done to my 11+ group. You really impressed me tonight. I have now uploaded the lesson (see lesson one) to your classwork stream. You have 90 minutes of homework (in lesson one) and about 40 hours of practise materials on vocabulary to keep you going until September.

If you practise 20 words a week using my challenges, I predict that will expose you to 1400 new words before your 11+ .



Add class comment...



# Should my child sit the entrance exams?

- Personal Choice. You have to decide what is best for your child.
- Most of our high achieving children DON'T apply for selective schools.
- Outcomes are not always based on school academic performance but we can guide you to your child's current attainment and aptitude?



# DRAFT TIMETABLE

(FINAL DATES NOT YET FULLY CONFIRMED)

**31<sup>st</sup> MAY**

**Deadline** for 11+ assessment requests

**SEPTEMBER**

On-line application system goes live

Preference forms and booklets available

**14<sup>th</sup> SEPTEMBER**

Upton Hall Test (Saturday)

**23<sup>rd</sup> SEPTEMBER**

11+ assessments (**New Date TBC**)

**20<sup>th</sup> SEPTEMBER**

St Anselms' test

**OCTOBER**

Independent Assessment Board

**21<sup>st</sup> OCTOBER**

Results to parents by this date

**31<sup>st</sup> OCTOBER**

**Deadline** for preference forms

**7<sup>th</sup> OCTOBER**

Birkenhead High School Academy Music  
Aptitude Assessments

**1 MARCH**

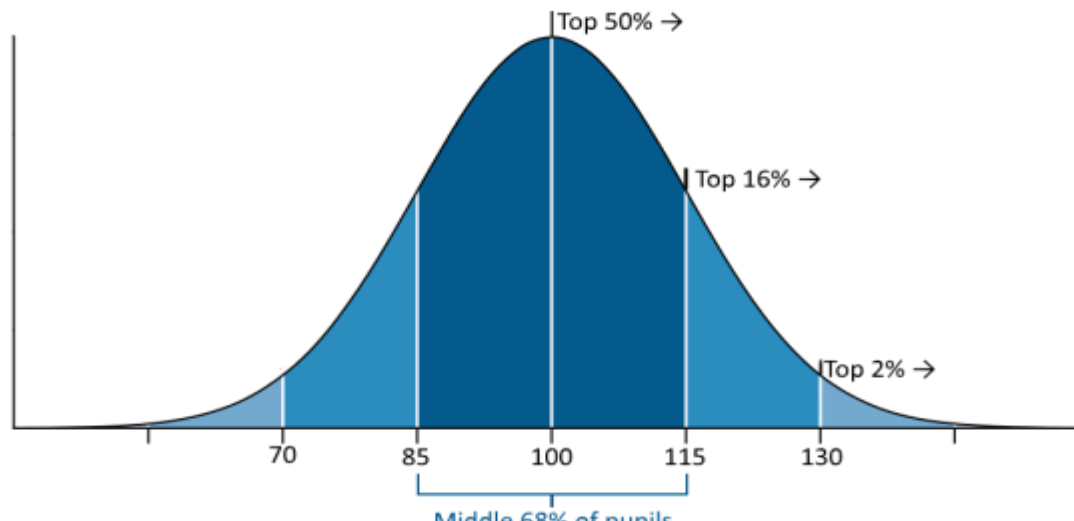
**ALLOCATION DAY**

# Non-Catholic 11+ tests

- Parents advised their child's test venue in August
- Two multiple choice tests of 45-50 minutes each
- Tests taken on the same day with a short break between
- Mixture of verbal (vocabulary and comprehension), non-verbal and maths questions on both tests
- Sections are timed using an audio CD
- Pencil and eraser are only equipment needed
- Exam conditions apply – no mobile phones or other electronic devices allowed
- Tests are marked centrally by an independent body, not by the test venue
- Parents cannot see test papers or answer sheets

# Scaled Scores Explained

- Your child's score is reported in a scaled score.
- This is calculated using age and their raw test score.
- 100 is average.
- 118+ is top 15%
- Have two tests so need combined scale score of 236.



# 11+ tests and applying for a place

- **Apply by 31<sup>st</sup> May**
- Selective test results are sent to parents by 21<sup>st</sup> October.
- **All parents must submit a preference application by 31<sup>st</sup> October to be on-time.**
- If their child has **not reached the standard**, parents should not give the grammar school as a preference as it will be withdrawn.
- Parents of **children who miss the test date** must still apply by 31<sup>st</sup> October – if they do not reach the standard then the highest non-grammar preference becomes the highest preference.
- Parents of children who have not reached the standard can submit a written appeal after 1<sup>st</sup> March if they wish to do so. Only be successful with good grounds for appeal.

# Applying on-line

➤ 11+ registration in May (deadline is 31<sup>st</sup> May)

➤ Places application from 1st September

<https://www.wirral.gov.uk/schools-and-learning/school-admissions/apply-primary-or-secondary-school-place>

## Why apply on-line?

➤ It is quick, easy and secure.

➤ Apply from home 24 hours a day, 7 days a week (from 1<sup>st</sup> September).

➤ You can apply from a computer, smartphone or tablet with internet access.

➤ No risk your application will be lost in the post.

➤ You receive an email confirming that your application has been submitted and received.

➤ The system has a series of security features that will prevent others from seeing your information.

➤ You **receive your offer by e-mail on allocation day.**



## Tips for Choosing the Right School for Your Child

### **Number Two:**

**Apply online. Meet the 31<sup>st</sup> May deadline for 11+ and deadline of 31<sup>st</sup> of October for secondary places. Keep your online receipt secure.**

# **Will secondary schools know what rank I have put them down?**

**NO. Schools are not sent the actual preference forms.**

**They are sent:**

**Child's name, address, date of birth, current school, siblings and faith information (if relevant)**

**Schools are not told in what order their school has been put down as a preference.**

# CO-ORDINATION

If you live in Wirral but want a school place in another local authority (LA), you must apply through Wirral as your home LA (either on-line or paper).

Parents who don't live in Wirral, but want to apply for a Wirral school, must apply through their home LA.

**There will be a single offer of a secondary school place.**

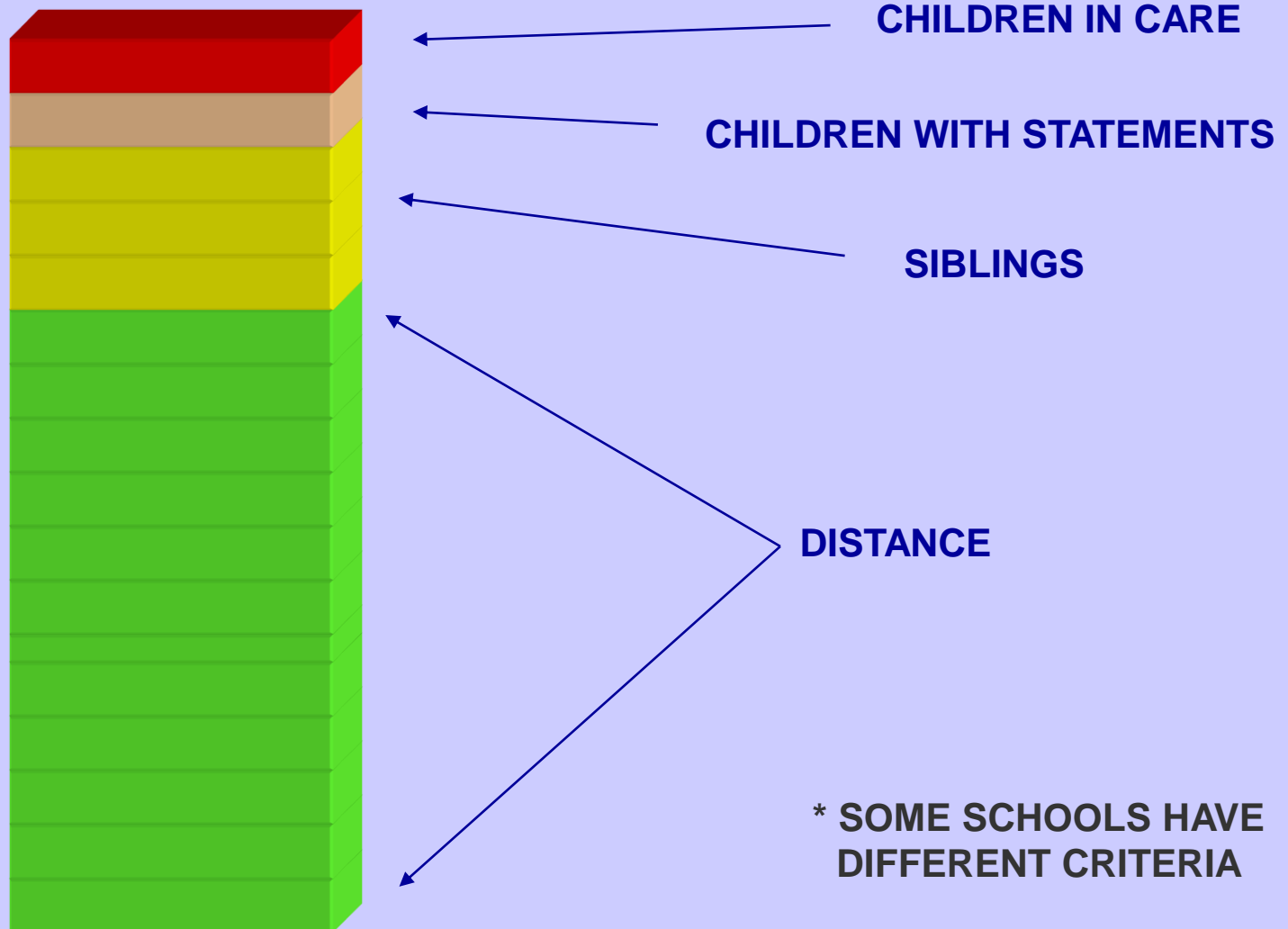
Parents will be informed of their outcome of their applications by their home LA, not by the LA where the school is located.



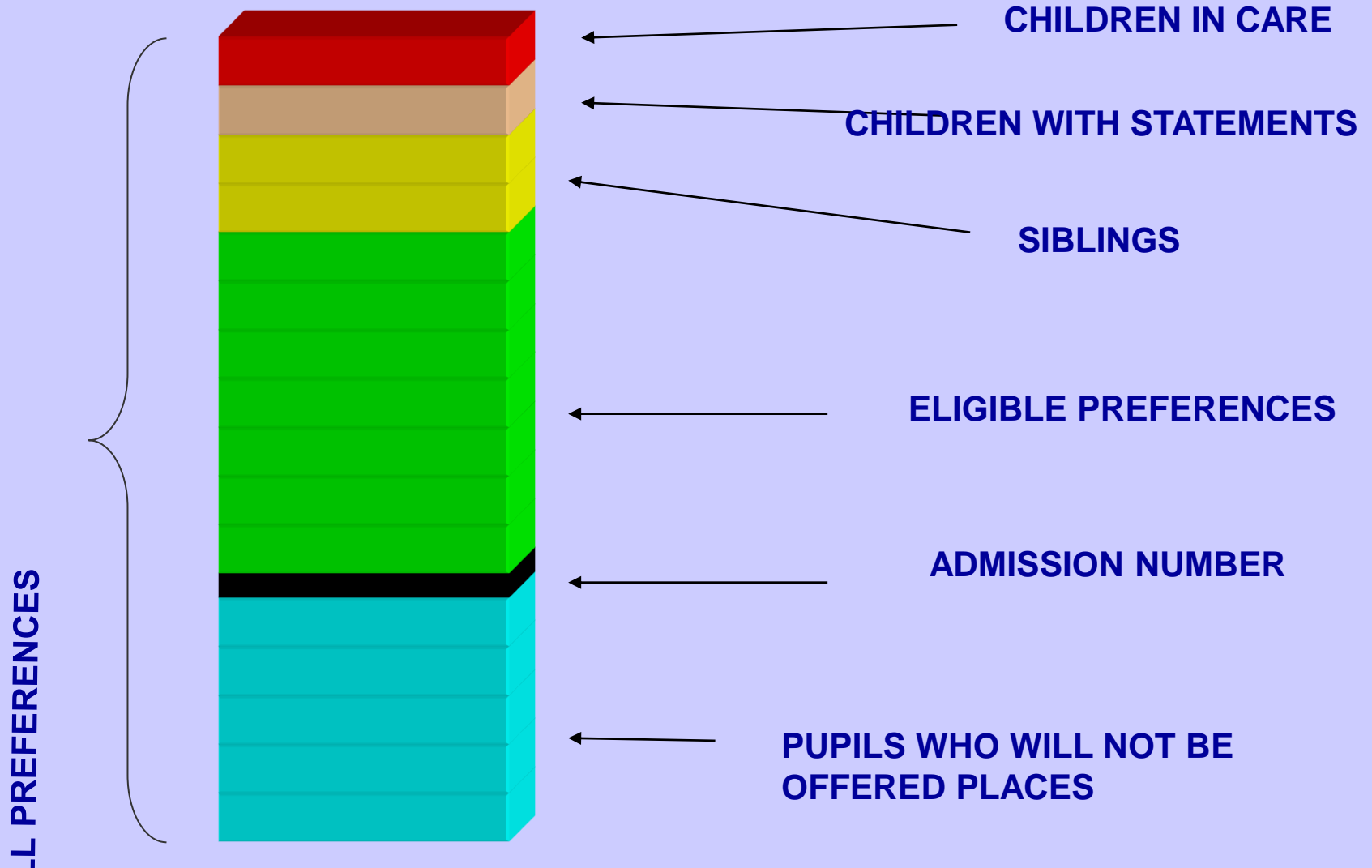
## WHAT HAPPENS TO MY PREFERENCES?

THE LA, OR THE SCHOOLS\*, DRAW UP A “STACK” OF APPLICANTS PUTTING THEM IN ORDER USING THE OVERSUBSCRIPTION CRITERIA FOR THE SCHOOL

- CHILDREN IN CARE, STATEMENTED CHILDREN, SIBLINGS AND DISTANCE



# THE ADMISSION NUMBER IS APPLIED TO DETERMINE WHO IS OFFERED A PLACE





## Tips for Choosing the Right School for Your Child

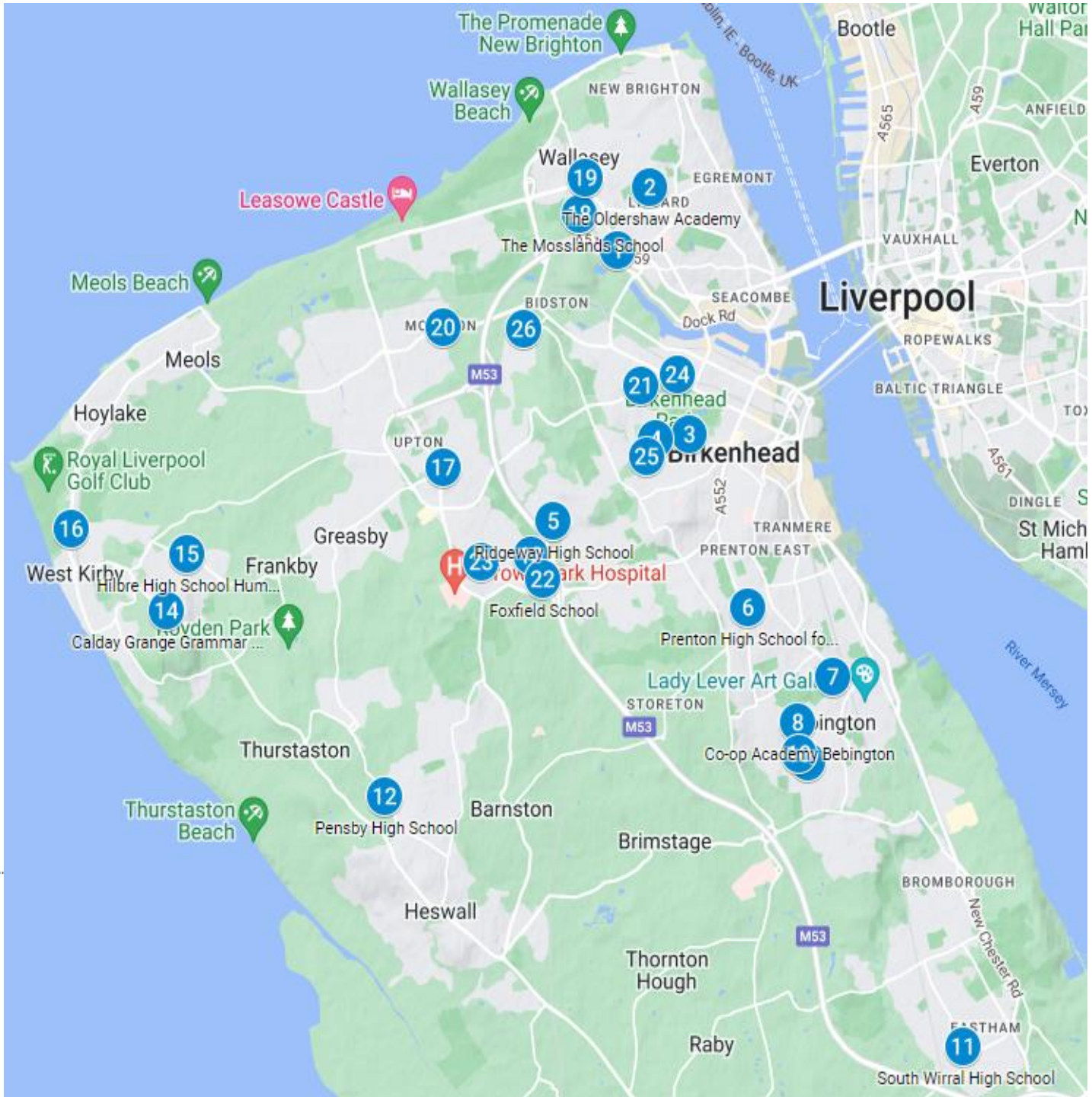
### **Number Three:**

**Be informed. Visits schools. Listen to their offer. Ask questions. Visit their website.**

**Look at the data and OFSTED reports.**

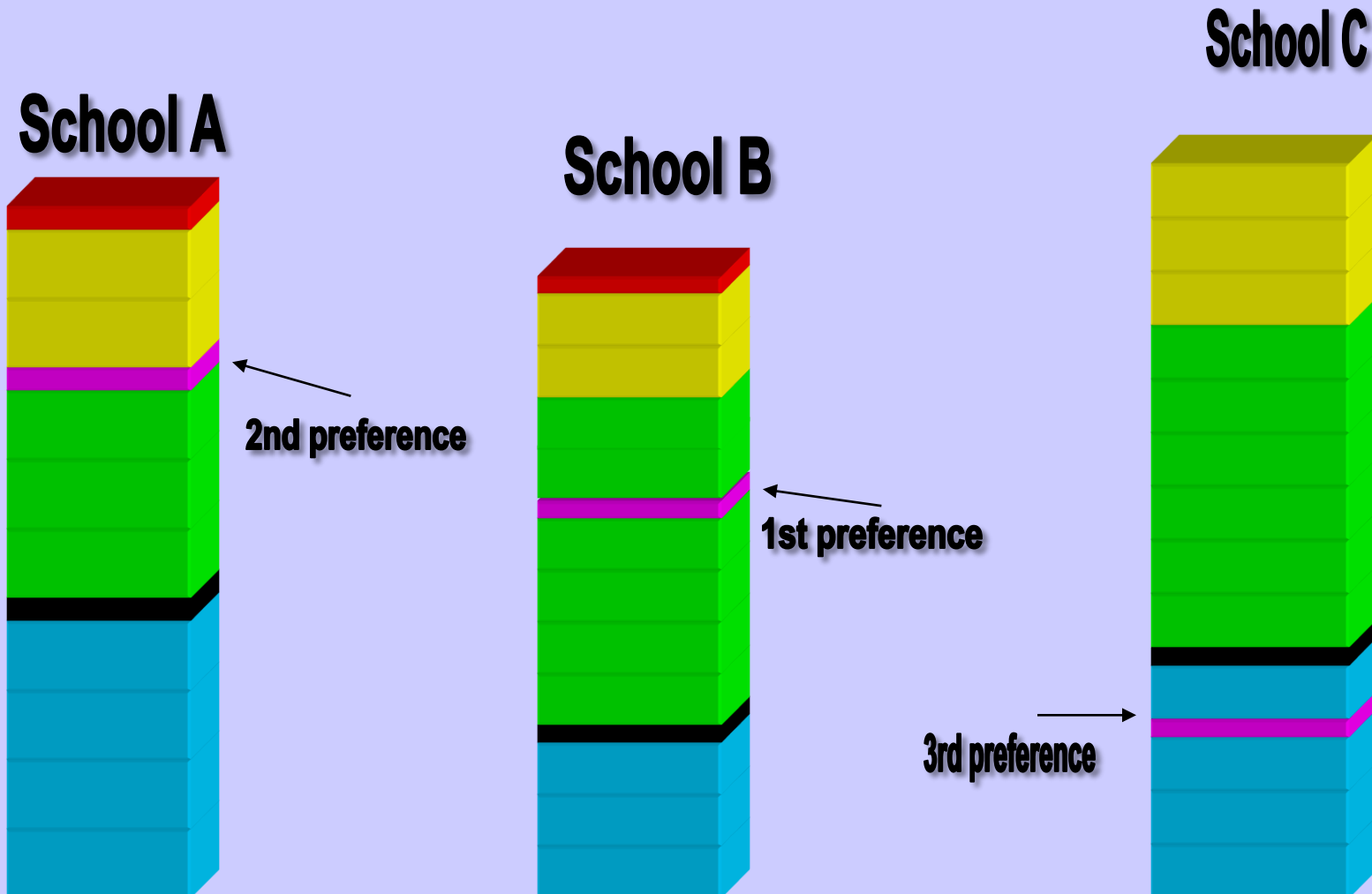
**Ignore the gossip.**

- 1 Weatherhead High School
- 2 The Oldershaw Academy
- 3 The Birkenhead Park School
- 4 St Anselm's College
- 5 Ridgeway High School
- 6 Prenton High School for Girls
- 7 St John Plessington Catholic College
- 8 Co-op Academy Bebington
- 9 Wirral Grammar School for Boys
- 10 Wirral Grammar School for Girls
- 11 South Wirral High School
- 12 Pensby High School
- 13 Woodchurch High School
- 14 Calday Grange Grammar School
- 15 Hillbre High School Humanities College
- 16 West Kirby Grammar School
- 17 Upton Hall School (FCJ)
- 18 The Mosslands School
- 19 St Mary's Catholic College
- 20 Clare Mount School
- 21 Wirral Hospital School and Pupil Access and...
- 22 Foxfield School
- 23 Meadowside School
- 24 Kilgarth School
- 25 Birkenhead High School Academy
- 26 The Observatory School



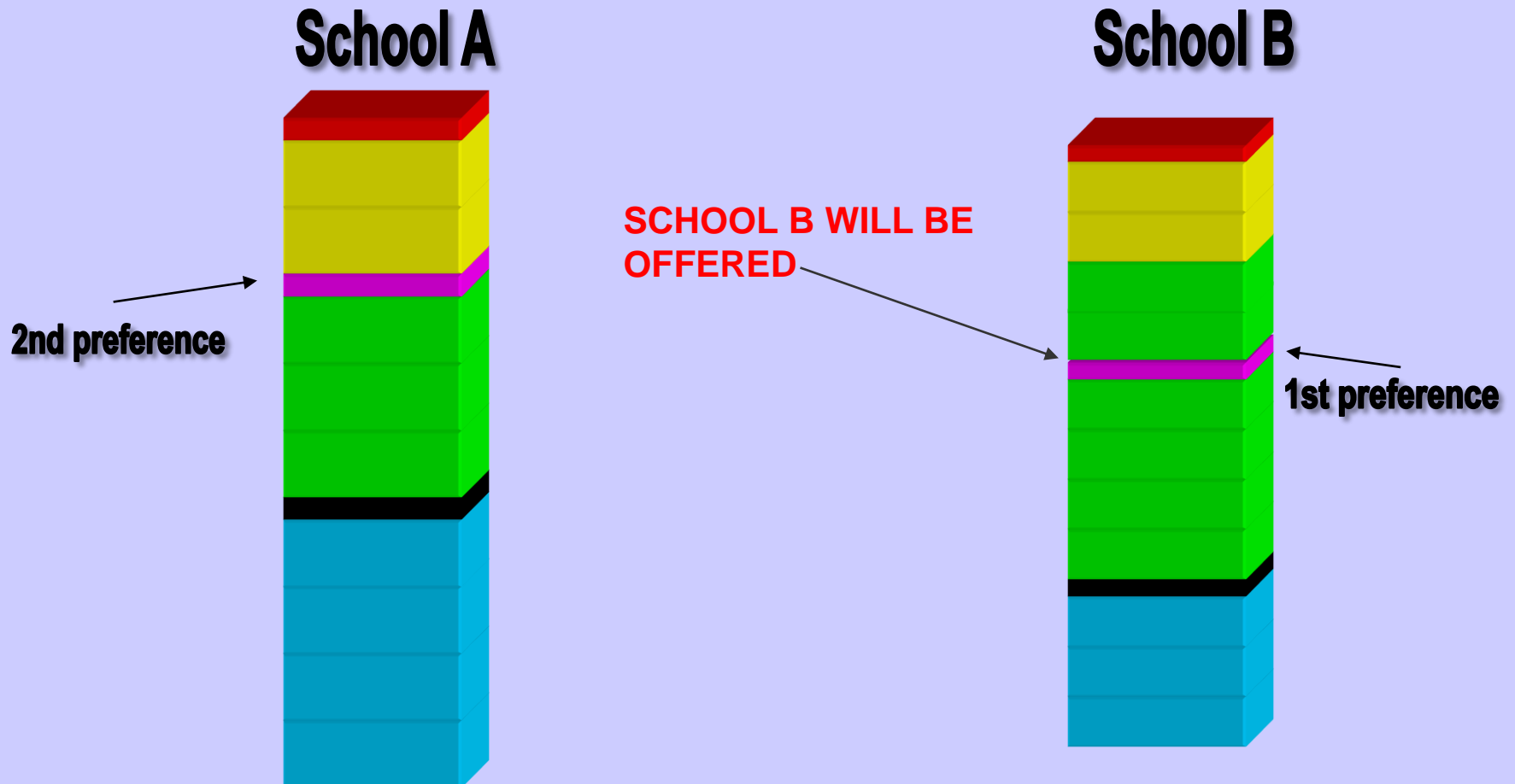
## WHAT DOES EQUAL PREFERENCES MEAN?

THIS MEANS THAT WE GIVE EQUAL VALUE TO ALL PREFERENCES WHEN DRAWING UP THE STACKS AND ONLY LATER ON WILL THE ORDER OF YOUR PREFERENCES BE TAKEN INTO ACCOUNT.



## IS THE ORDER OF MY PREFERENCES IMPORTANT?

YES IT IS, BECAUSE IF WE CAN OFFER YOUR CHILD A PLACE AT MORE THAN ONE SCHOOL, THEN WE WILL ALLOCATE A PLACE AT THE SCHOOL YOU NAME AS THE HIGHEST PREFERENCE.





## Tips for Choosing the Right School for Your Child

### **Number Four:**

- **Stick by your best choices but use your preferences so you are not left with a series of rejections.**
- **What is your safety net school, where it is likely you will be offered a place? Remember distance is most important factor after legal exemptions and siblings.**

# **National Allocation Day is 1st March 2024**

- **On-line applicants will be sent an e-mail from the LA on this day.**
- **Paper applicants will be posted an offer letter from the LA on this day (2<sup>nd</sup> class post only).**
- **The offer will come from the home LA and will be the highest preference that can be allocated.**
- **Each child will only get one offer of a place.**
- **After 1st March parents can appeal in writing to an independent panel for a place at another school.**



# For more information

➤ Go online to

**<https://www.wirral.gov.uk/schools-and-learning/school-admissions/apply-primary-or-secondary-school-place>**


➤ Take advantage of the Open Days and Evenings

# Use the Council Website

<http://www.wirral.gov.uk/my-services/childrens-services/education-and-learning/schools-and-colleges/information-parents-and-carers/school-admissions>

emsonline.wirral.gov.uk/CitizenPortal\_LIVE/en

St George's Primary... EVOLVE - Wirral Bor... Secure Access Education - Publica... EVERY ScholarPack MIS BlueSky Education [...] The Great Teaching... Wirral Self Serve The National Colleg...

 **WIRRAL**

**Citizen Portal**

Home Sign in Register Cymraeg

Don't have an account? Please [register an account](#)

Email address

Password

[Forgot your password?](#)

## Welcome to the ONE Citizens Portal for Wirral Council

To use this site **you will need to register**. Please note that by registering, you are providing consent for your information to be used by Wirral Council for purposes covered by legislation and to ensure that your child/children are receiving the services they are entitled to. See the Privacy Notice for more information.

You can then create, submit and view applications for supported child related services.

The Portal is open all year round for in-year transfer applications for children and young people already of school age (Foundation 2 up to Year 6 and Year 7 up to Year 11). **Important - the Portal cannot be used to apply for nursery or pre-school places, for private school places or for post-16 places (sixth form). You must apply direct to the school, college or preschool.**

Before applying for school places, you are advised to read the relevant information for parents, which is available [online](#). The Mainstream Admissions Team is unable to give out any information about school allocations over the telephone.

The Wirral Admissions team is working from home with limited access to telephones and all enquiries must be sent by email to [schooladmissions@wirral.gov.uk](mailto:schooladmissions@wirral.gov.uk) **Information about school applications cannot be given out over the telephone**. The team endeavours to respond to emails within 10 working days; please do not contact the team unless the 10 days has expired.

### Advance notice of Portal downtime

The Portal is offline for routine maintenance between 12am (midnight) and 4 am each day. Please try again at another time.

The Portal is expected to be offline for scheduled maintenance for 24 hours on:  
\* Monday 8th August 2022 \* Wednesday 2nd November 2022 \* Monday 12th December 2022

### Applying for a school place for young people who are already school age - In Year Transfers

# What if?

- What if the schools are over subscribed?
- What if my child under performs in the entrance exam?
- What if my child is experiencing difficult personal circumstances?
- My child has special educational needs?
- What if, I have to go to appeal?
- What if I can't make my mind up over which school (selective or non selective)?

# How do I make the best choice?

- Visit
- Look at all options (ignore the grapevine).
- Ask questions
- Look at the data
- Go back to what your child needs.