



## Plan for Re-Opening Our School Monday 8<sup>th</sup> March

We are delighted to be welcoming all children back to school on Monday 8<sup>th</sup> March. Having children back at school is essential not desirable.

We want to start by thanking all our families for your huge effort over the last 8 school weeks. That effort was to help our community and country manage the second lockdown, reduce community transmission rates and help lower risk to illness and death to those who are at risk from Covid-19. **Primary schools were never closed because children were at risk or because schools were places of risk.**

Although we still have a long way to travel, your efforts have made a difference. We are now ready to have all pupils back at school. It is absolutely right that opening schools is the first step towards ending our national lockdown.

There are very few changes to our safety plans. Parents should familiarise themselves with:

- Our safety plan and risk assessment can be read by clicking [here](#).

Throughout 2021, we have continued to operate as a busy school with over 50% of children attending nursery and Emergency School. Governors and senior staff remain secure in the science that shows that children and staff are at very low risk from Covid-19 and safe at school with a rigorous safety plan. There are far greater risks to our children's health from mental health concerns, road safety, obesity, air pollution and other factors that we manage daily.

If any parents are concerned about the risk associated with school, Mr Cassidy is holding a family briefing with Question and Answer (via Chat only) on Zoom this Thursday at 5.30pm. The invitation to the meeting is:

### Join Zoom Meeting

<https://zoom.us/j/95354232268?pwd=eGVUV2plazJkQklZbDMxMEp1M2V4QT09> Meeting  
ID: 953 5423 2268

Passcode: 7ys70Z

**We believe that we are now moving into a phase that will involve us learning to live with Covid-19.** As a school our safety plan will restore the safety measures applied to keep children safe. We have taught and practised a 'virus busters' approach that has helped our children understand three simple steps for safety.

### Children, Parents and Staff @



St George's Virus Busters



St George's  
Primary School



St George's Virus Busters

### Are Virus Busters

**Three important messages are:**

**1. Stay Clean.** We wash our hands regularly and use the hand sanitisers provided.

**2. Be Hygienic**

- put tissues in bin
- keep hands off each other and your face
- cough into sleeve or tissue etc.

**3. Keep a Safe Distance.** Viruses travel. We can stop them moving by keeping a safe distance.

Our children have responded well to these measures and ensured that our school has remained a safe, secure and happy place to learn.

There have been, and will continue to be, some cases in schools. Since the pandemic began, we have to close 8 bubbles in response to a 'live case' in school. This will continue. However, it is important to remember that this is a measure to limit any risk of further transmission, not an indicator of high risk in school..

### **We believe it is vital that children return to school. Key reasons are:**



It is good for children's mental health and well-being. School is a place of security and support. Over 50% of children report that their mental health has declined during the Covid-19 pandemic.



It is important that children get the opportunity to socialise with other children. This is important socially, for oracy skills and it also cited by our children as the thing they have missed most during Covid-19 pandemic.



School is the best place for children to learn, grow and develop. It is vital that we ensure that this generation's prospects are not harmed by Covid-19.



Evidence shows that with careful planning and key safety measures children can be kept safe at school. Children are not at any high risk from Covid-19. We can and will open safely.

### **What is the school's plan?**

We will be opening as normal on Monday 8<sup>th</sup> March. **No change to organisation or timetables.** All children will go back to their usual class. Heard a rumour that George the Dragon may be able to join us.

March 2021						
M	T	W	T	F	S	S
1	2	3	4	5	6	7
8	9	10	11	12	13	14
15	16	17	18	19	20	21
22	23	24	25	26	27	28
29	30	31				

Monday 8<sup>th</sup> Mar 2021

We are better prepared than the last lockdown. Engagement with remote learning has been high and maintained a strong link with school. Over 90% of children have engaged well with remote learning. 98% of children have had some contact with remote learning. We have contact with 100% of families. **All staff will be reaching out to their children via assemblies or shared lessons this week to ensure that they have some school contact before next week. Mr Cassidy will also upload a welcome back film on Google Classroom and See-Saw.**

**If you have any specific concerns, please call or e-mail us on:**

**[schooloffice@stgeorges.wirral.sch.uk](mailto:schooloffice@stgeorges.wirral.sch.uk) and a member of staff will respond to you this week.**

We know that it is important that we help our children build up their confidence about school. We are asking families to take a walk past the school this week. We have set up several treasure trails that include St George's and the local area. More information will be uploaded to your learning platforms over the next couple of days so keep an eye out!

For a reminder we have left the timetable at the end of this letter. **Please don't arrive early, we want to minimise contacts between adults at the school gate.**

If your child has received a letter stating that they are clinically extremely vulnerable, it is vital that you contact us immediately so we can ensure the right level of support is in place for your child.

## Why are Children in Safety Bubbles?







Bubbles are at the heart of our safety plan. Our main aim is to reduce the risk of transmission. The safety plan requires children to learn, eat and play in their classes to reduce transmission. Each class will continue have their own play zone for break times and lunchtimes. We are calling this the 'bubble approach'. Children are not in quarantine and will see other friends but they won't be having close contact.

**Children attending Dragon Club will be kept in year group bubbles.**

## Is it safe for schools to reopen?

Yes. We keep on stressing that schools were closed to support our national lockdown efforts, not because they were a place of high risk to children or staff. We remain confident in the scientific advice that shows us that if we apply highest safety standards, we can ensure that our school remains a safe, secure and happy environment. We have demonstrated this. We have developed our safety plans with the support of Public Health, Wirral Council and Department for Education.

Our 'virus buster' programme and application of the pod model is central to this. Key steps for safety are:

	We constantly review our safety plans ensuring that we have the highest standards of safety and organisation every day.
	Have the highest hygiene standards. Ensuring that our school has sinks, cleaning rotas, sanitisers, signs, required PPE, additional bins etc to make sure this happens every day.
	Bubble approach will reduce the risk of transmission
	Testing and symptom screening means that if anybody becomes ill they won't be in school. If a child or family member has Covid-19 symptoms or a positive test they can't come to school. All staff are tested twice a week and from 8 <sup>th</sup> of March families can apply for home testing kits.
	Increasing the frequency of cleaning at the school. Our environment is cleaned regularly. We have a deep clean if there is any Covid-19 infection in the school.
	Made significant changes to school day and collection arrangements to ensure that adult social distancing is stringent.

## What We Need From Our Families?

We need your support to keep our community safe. You are used to the new routines. Road closure and staggered start and exit times have been designed to minimise risk of adult interaction and spread of Covid-19.

## 1. Please follow the rules below

- 1 adult per child to limit crowd size.
- Adults maintaining 1m+ social distancing (even outdoors).
- Self isolating if you are symptomatic or asked to because of test and trace (see below).
- Adults wearing face coverings at drop off and collection times.

## 2. Be Symptom Aware

Although there are other symptoms associated with Covid-19, key symptoms remain:

- **High temperature and fever.**
- **New and continuous cough.**
- **Loss of taste or smell.**

**If in doubt, get tested.**

We will ask you to get a test from Public Health England if your child has symptoms. You can book this below:

[https://my.wirral.gov.uk/service/COVID\\_19\\_Testing\\_Process](https://my.wirral.gov.uk/service/COVID_19_Testing_Process)

## 3. Follow Isolation Guidance

If you have symptoms at home, a positive test or have been contacted by Test and Trace, please stay at home and isolate. It is vital that we begin to restrict the spread of infection in our community.

Please let us know immediately if there is a positive test in your family or you have to self-isolate. We will support your child with remote learning.

## 4. Follow the Community Rules

This is a community effort. We need all our families to ensure that we are following national rules on mixing and contact.

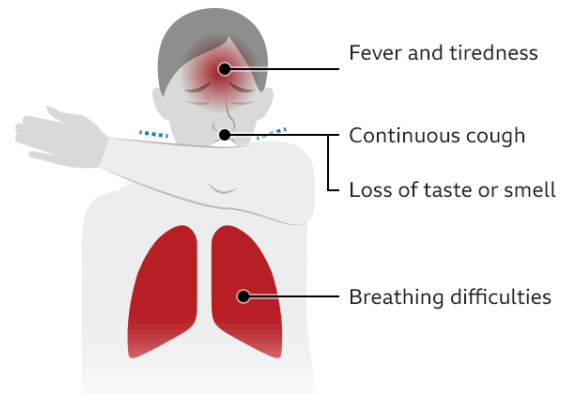
### What Happens When a Class Bubble Closes?

It is probably inevitable that we will have to close other class bubbles. Currently nearly all instances of Covid-19 in primary school involve home or community infections coming into school. Risk of infection being spread in school is small because it is such a controlled environment. We know that the risk to children's health through Covid-19 or risk of further infection to other children is very small but it is essential that we all follow the guidance to minimise risk of further infection in our families, school and the wider community.

- A class bubble will normally be closed if a child or member of staff in the bubble tests positive and there has been close contact in the last 48 hours before the test or when Covid-19 symptoms started. We will always seek advice from Wirral Council and Public Health when making this decision.
- We close a bubble to prevent risk of further community infection and to keep everybody safe. In primary schools, the risk of further transmission is very small but we have to take all sensible precautions.
- We will check on any other close contacts within school but expect that any closures will be limited to one class.
- We will contact you immediately. We will send out a text message to families of the class involved followed by a letter explaining what is happening. We will either ask you to keep your child off school or to come and safely collect them.



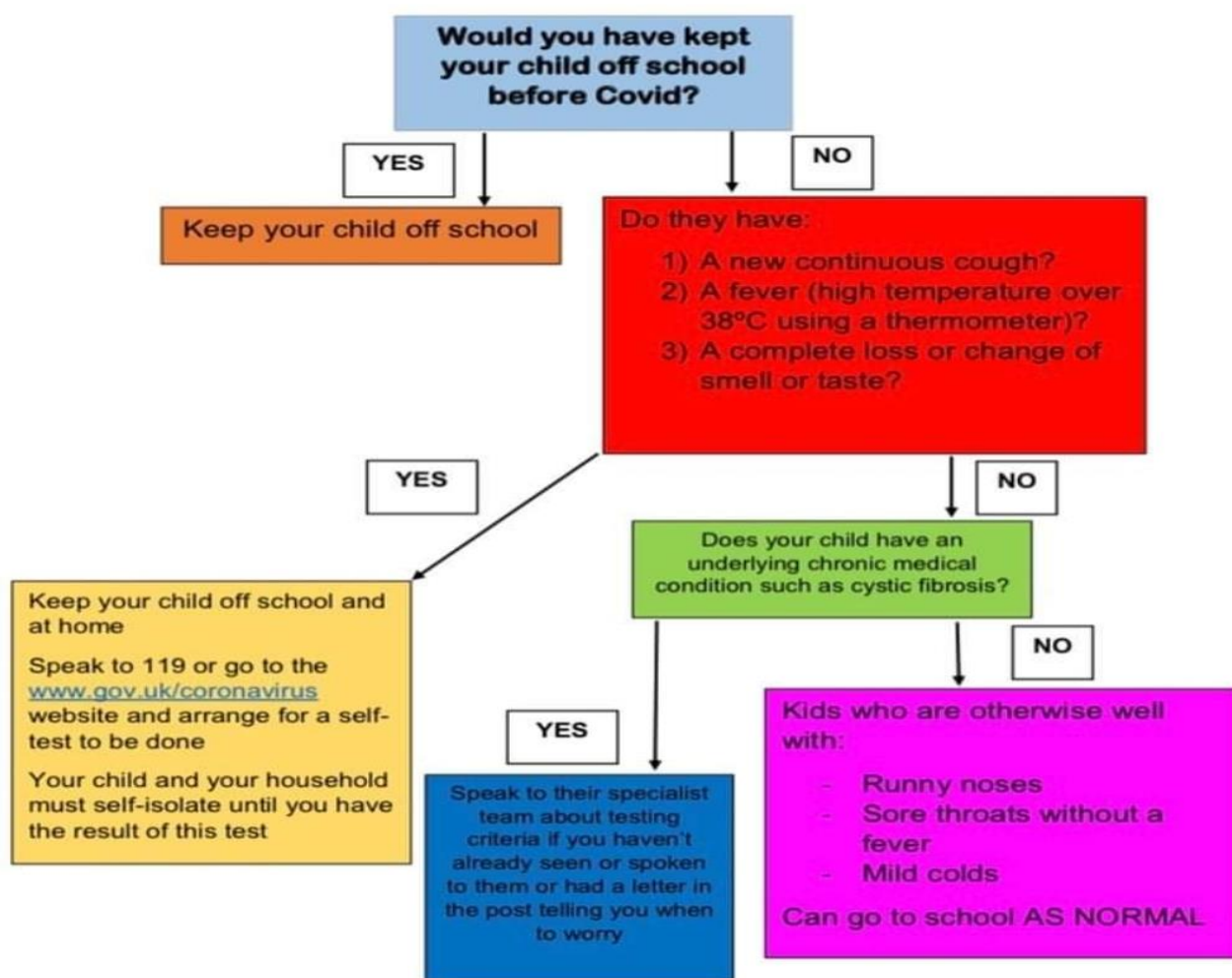
### Coronavirus: Key symptoms



- Bubble will be closed from 10 days of either test or symptoms first being evident. We will let you know the dates for closure as soon as possible.
- We will also let you know the arrangements that we have made for your child's learning. We will provide daily online learning and also access to workbooks (for children in years 1 to Year 6) if you do not have online access. We can offer laptops for use at home.
- Class teacher will be in touch daily online.
- Your child will have to self-isolate for 10 days. Nobody else will have to isolate in your family unless they are Covid-19 symptomatic.
- We will support any family with meals and food parcels if they are required.

The hardest part for us is explaining to young children that this is a safety and precaution measure. It doesn't mean that school is unsafe. We want school to carry on but it might be remotely for a while. We also know this will cause huge disruption to families. We can only get through this by working together.

**We have included the flowchart to help you if your child is unwell.**



### Do I have to send my children to school?

Yes. Government has said that attendance is compulsory. We would like to see our children back at St George's. However, we don't want families to feel under pressure. If you are unsure and have questions, please contact us. Our aim is to help you make an informed and confident decision.

**If you have any specific concerns, please call or e-mail us on [schooloffice@stgeorges.wirral.sch.uk](mailto:schooloffice@stgeorges.wirral.sch.uk) and a member of staff will respond to you this week.**

If your child has received a letter stating that they are clinically extremely vulnerable, it is vital that you contact us immediately so we can ensure the right level of support is in place for your child.

### **Family testing**

You may have seen in the news over the weekend that families of pupils are to be offered tests. The details are

From 1 March 2021, if you're a member of a household, childcare bubble or support bubble of staff or a pupil you can get a twice-weekly test:

- **through your employer if they offer testing to employees**
- **at a local test site**
- **by collecting a home test kit from a test site**
- **by ordering a home test kit online**

#### **Get a test through your employer**

Your workplace may offer rapid lateral flow testing to you. Contact your employer to find out more.

#### **Take a test at a rapid lateral flow test site**

You can take a rapid lateral flow test at a local site. Testing at these sites is assisted, which means you will swab yourself under the supervision of a trained operator.

You may need to book an appointment.

[Find your nearest rapid lateral flow test site](#)

#### **Collect test kits**

You can collect up to 4 home test kits at a local collection point. Each kit contains 7 tests.

Anyone 18 or over can collect. You can check online if the location is busy before you go. The online service to find your nearest home test kit collection point will be available shortly.

#### **Order home test kits online**

If you cannot get tested at your workplace, or are unable to go to a test site or collect test kits, you can order a home test kit online.

The online service will be available from 1 March 2021

#### **What twice-weekly testing involves**

You will be asked to:

- take a test twice a week (every 3 or 4 days apart)
- report every result to NHS Test and Trace on the same day you take the test [Report your test result online](#) or by calling 119.

If anyone tests positive or gets coronavirus symptoms, they should tell the school and:

- self-isolate immediately
- get a PCR test to confirm the result
- follow the [stay at home guidance for households with possible coronavirus infection](#)

A negative result means the test did not find signs of coronavirus. But this does not guarantee you do not have coronavirus, so you should keep following all [coronavirus advice](#) including:

- regular handwashing
- social distancing
- wearing a face covering where recommended

## 2020-2021 Timetable

	Lower Site						Top Site	
	F1	F2	Y1	Y2	Y3	Y4	Y5	Y6
<b>Enter School/Start of Day</b>	8.30am	8.40am	8.50am	9.00am	9.00am	8.50am	8.40am	8.30am
<b>Play Time in Allocated Zones</b>	Ongoing in pod rota		10.00 – 10.20 am	10.05 – 10.25 am	10.35 – 10.55 am	10.30 – 10.50 am	10.15-10.35am	10.40 – 11.10am
<b>Eat and Play</b> <b>Lunch and Indoor</b>	11.30 – 11.50 am	11.45 – 12.05 pm	11.40 am – 12.00 (In hall and classes)	11.50 – 12.10 pm (In classroom)	12.15 – 12.45pm (In classroom)	12.05 – 12.35pm (In classroom)	12.00 – 12.20pm (In classroom)	12.15 – 12.35pm (In classroom)
<b>Lunch Play in Allocated Zones/Pods</b>	11.50 am – 12.30 pm	12.05 – 12.45pm	12.00 – 12.30pm Story from 12.30 – 12.40pm	12.10 – 12.40pm Story from 12.40-12.50pm	12.45 – 1.15pm	12.35 – 1.05pm	12.20-1.00 pm	12.35 – 1.15pm
<b>Play Time in Allocated Zones</b>			2.00-2.15pm	2.05-2.20pm				
<b>End of Day</b>	3.00pm	3.10pm	3.20pm	3.30pm	3.30pm	3.20pm	3.10pm	3.00pm